


FIG2 LIABRARY FEEDBACK BCOM FY 2020-21


 Director
 IQAC
 Nutan Mahavidyalaya, Selu


 PRINCIPAL
 Nutan Mahavidyalaya
 SELU, Dist. Parbhani

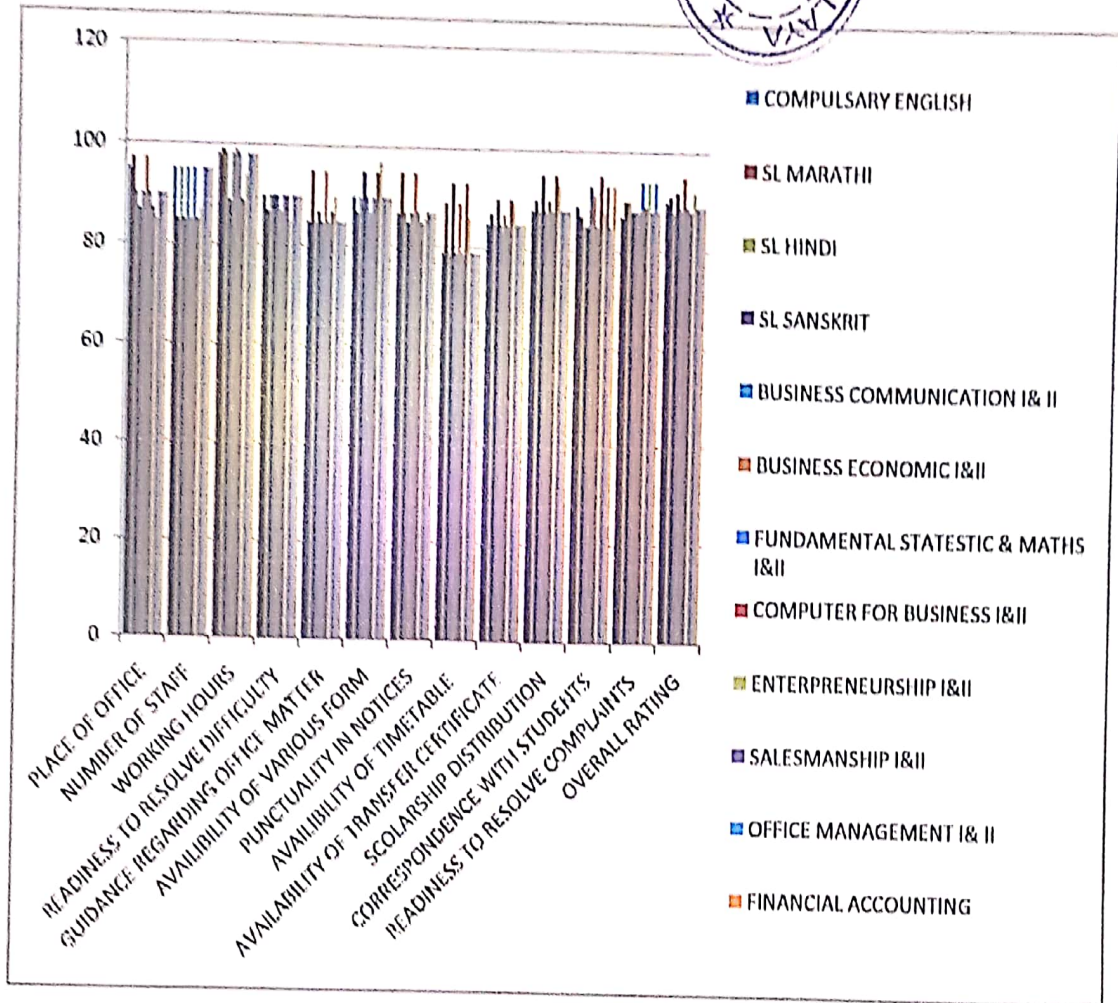


FIG3 OFFICE FEEDBACK BCOM FY 2020-21

Padma

Director
IQAC
Nutan Mahavidyalaya, Selu

[Signature]

PRINCIPAL
Nutan Mahavidyalaya
SELU, Dist. Parbhani



NUTAN MAHAVIDYALAYA, SELU -431503
DIST. PARBHANI
 Affiliated to Swami Ramchand Teerth Marathwada University, Nanded
 NAAC Re-accredited B+ Grade

Dr. Uttam Rathod
 Principal

Mobile No. 9421383119
 Email - principalnutan@rediffmail.com

Feedback Analysis Report

BCOM FY 2021-22

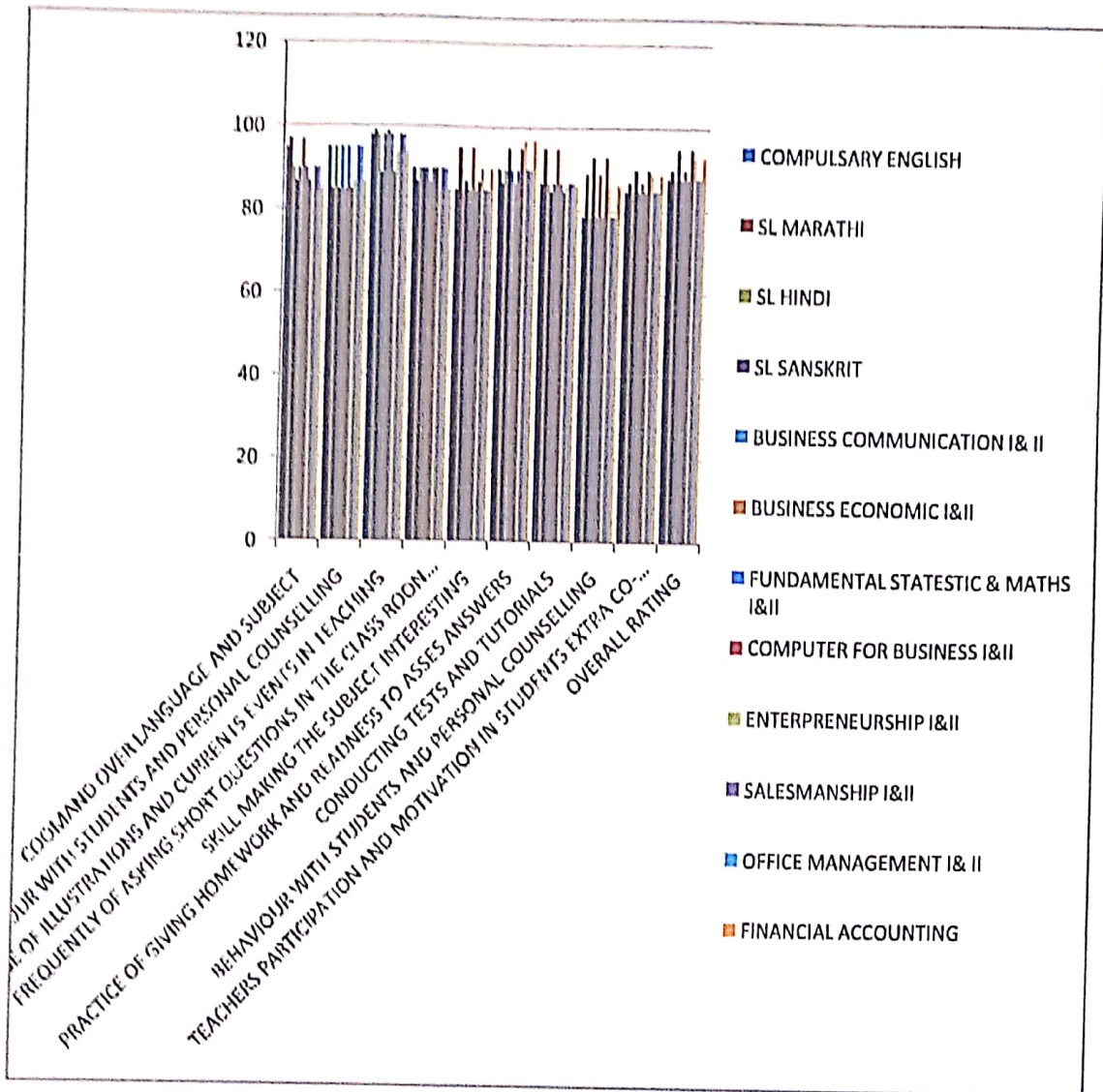


FIG1 CLASSROOM FEEDBACK BCOM FY 2021-22

Admanand
 Director
 IQAC
 Nutan Mahavidyalaya, Selu

Uttam Rathod
 PRINCIPAL
 Nutan Mahavidyalaya
 SELU, Dist. Parbhani

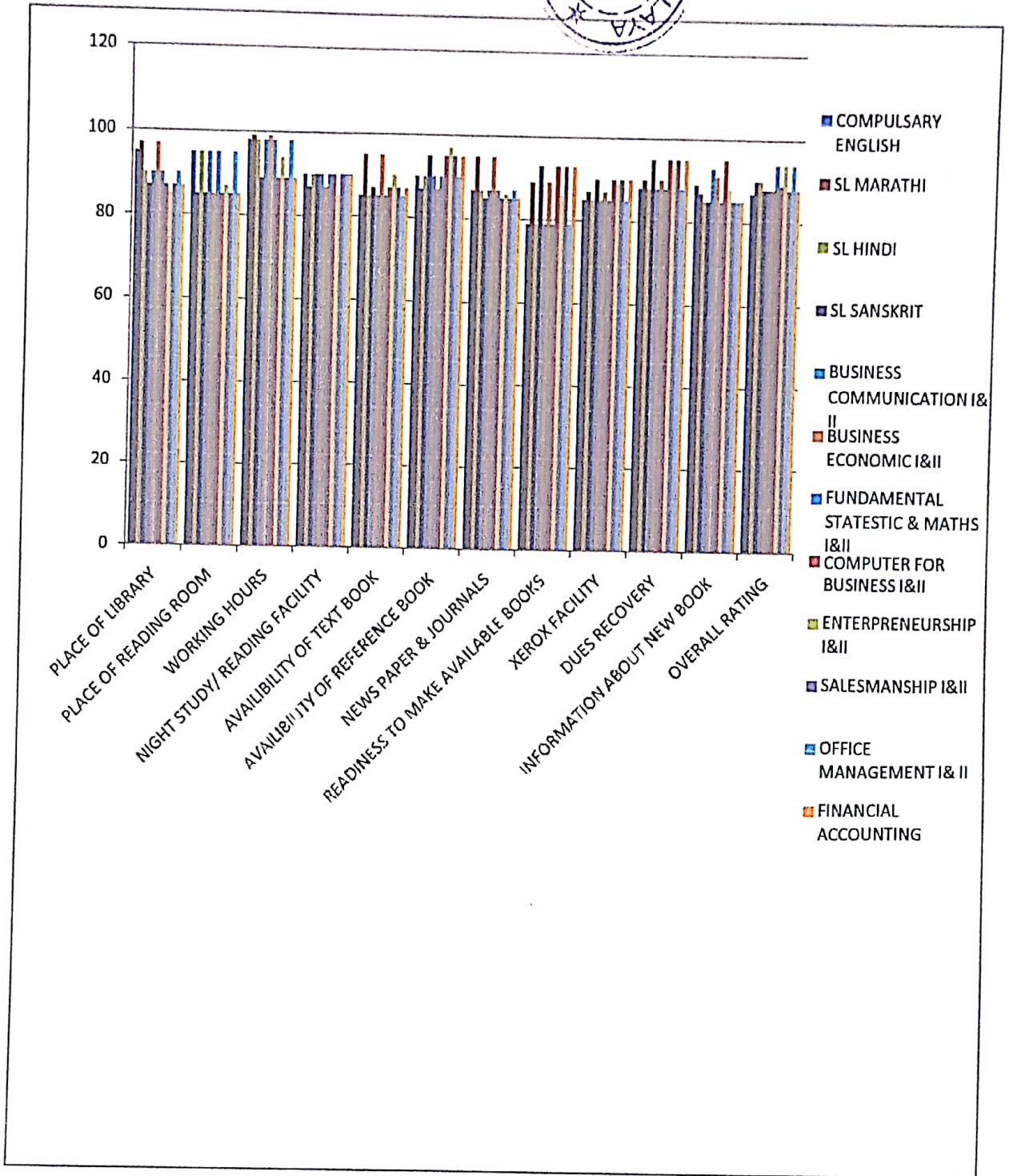


FIG2 LIABRARY FEEDBACK BCOM FY 2021-22

(Signature)
 Director
 IQAC
 Nutan Mahavidyalaya, Selu

(Signature)
 PRINCIPAL
 Nutan Mahavidyalaya
 SELU, Dist. Parbhani

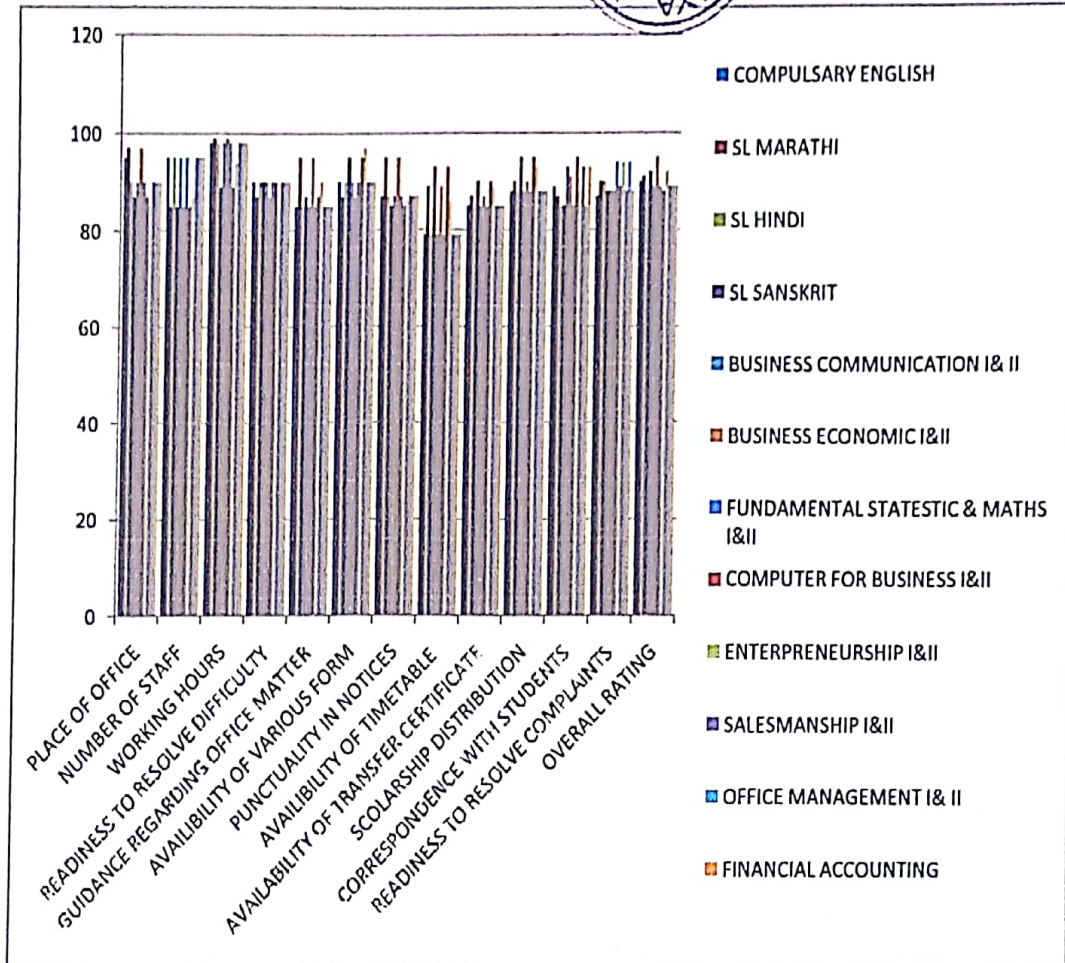


FIG3 OFFICE FEEDBACK BCOM FY 2021-22


 Director
 IQAC
 Nutan Mahavidyalaya, Selu


 PRINCIPAL
 Nutan Mahavidyalaya
 SELU, Dist. Parbhani



NUTAN MAHAVIDYALAYA, SELU -431503
DIST. PARBHANI
 Affiliated to Swami Ramanand Teerth Marathwada University, Nanded.
 NAAC Re-accredited U-Grade

Dr. Uttam Rathod
 Principal

Mobile No. 9421383319
 Email - principalnutan@rediffmail.com

Feedback Analysis Report

BCOM FY 2022-23

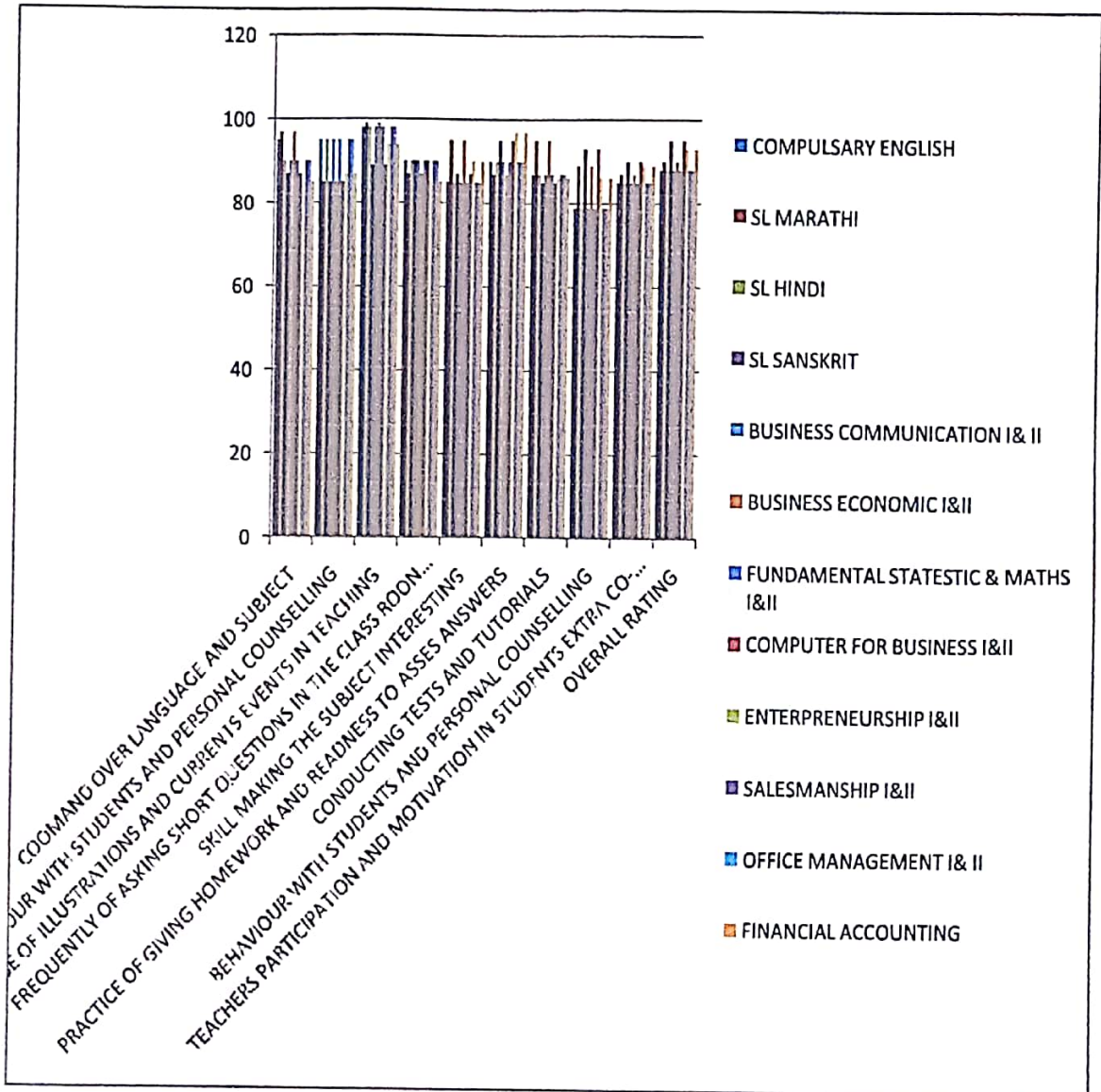


FIG1 CLASSROOM FEEDBACK BCOM FY 2022-23

Director
 IQAC
 Nutan Mahavidyalaya, Selu

PRINCIPAL
 Nutan Mahavidyalaya
 SELU, Dist. Parbhani

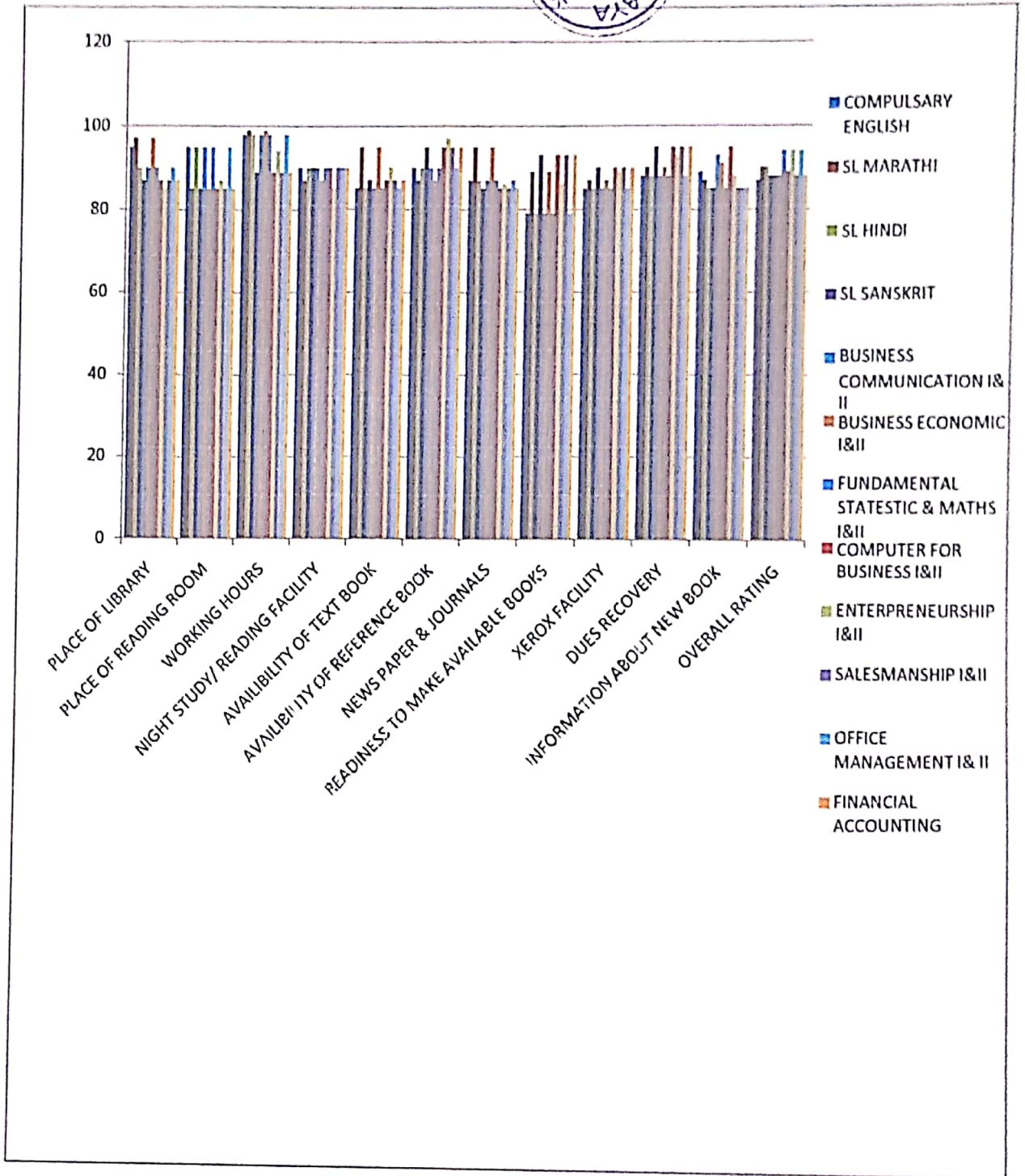


FIG2 LIABRARY FEEDBACK BCOM FY 2022-23

(Signature)

Director
IGAC
Nutan Mahavidyalaya, Selu

(Signature)

PRINCIPAL
Nutan Mahavidyalaya
SELU, Dist. Parbhani



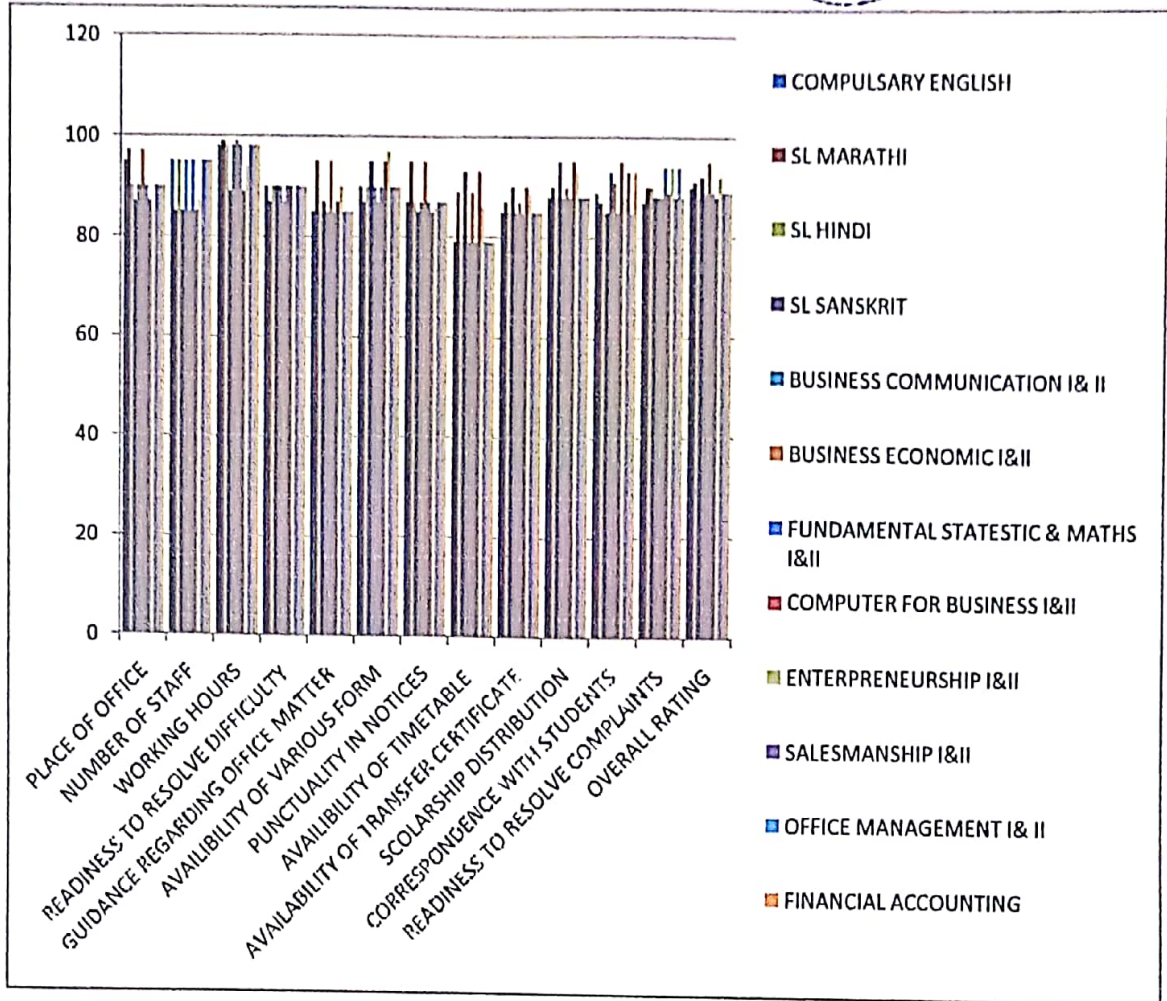


FIG3 OFFICE FEEDBACK BCOM FY 2022-23

[Handwritten Signature]

Director
IQAC
Nutan Mahavidyalaya, Selu

[Handwritten Signature]

PRINCIPAL
Nutan Mahavidyalaya
SELU, Dist. Parbhani